



THE KRESS INN



Features

- 46 Handsomely-Appointed Suites
- Whirlpool Suites
- Fireplace Suites
- Executive & Presidential Suites
- Adjacent to the F.K. Bemis Conference Center
- Convenient to many Great Area Restaurants and Attractions
- Attentive Staff

Services

- Complimentary Continental Breakfast
- Complimentary Airport Transportation
- Complimentary Wireless High-Speed Internet
- Free Parking
- Breakfast & Meeting Room

Room Amenities

- Green Bay Area's Newest All-Suite Hotel
- Free High-Speed Internet Access
- Speaker Phones
- Conference Calling
- Microwave
- Refrigerator
- Coffee Maker
- Hair Dryer
- Iron & Ironing Board

F.K. BEMIS CONFERENCE CENTER

Banquet & Convention Equipment

- Free Wireless High-Speed Internet Access
- Easels
- Flip Charts & Markers
- Overhead Projectors
- Slide Projector
- Data Projector
- VCR & Monitor
- DVD Player
- Large Screen (40") Monitor
- Laptop or Desktop Computers
- VHS Camcorder
- Speaker Phones
- Video Conferencing Equipment

All Equipment Included with Executive Meeting Room Rental, Excluding Data Projectors, Computers and Video Conferencing Calls.

Relax and unwind in the Green Bay area's newest all-suite hotel - The Kress Inn. It is the perfect retreat for the busy traveler. Each suite comes equipped with a speaker phone, high-speed Internet access, conference calling and ample work space. The Kress Inn's 46 spacious suites offer the perfect compliment to the F.K. Bemis Conference Center, located just across the street on the scenic St. Norbert campus.

Meetings, conferences and banquets for groups up to 200 meet their potential at the F.K. Bemis Conference Center. Elegant, yet versatile, meeting planners will find all they need to orchestrate a successful event. Integrated multimedia capabilities and customized set-up options create the ideal atmosphere for any occasion.



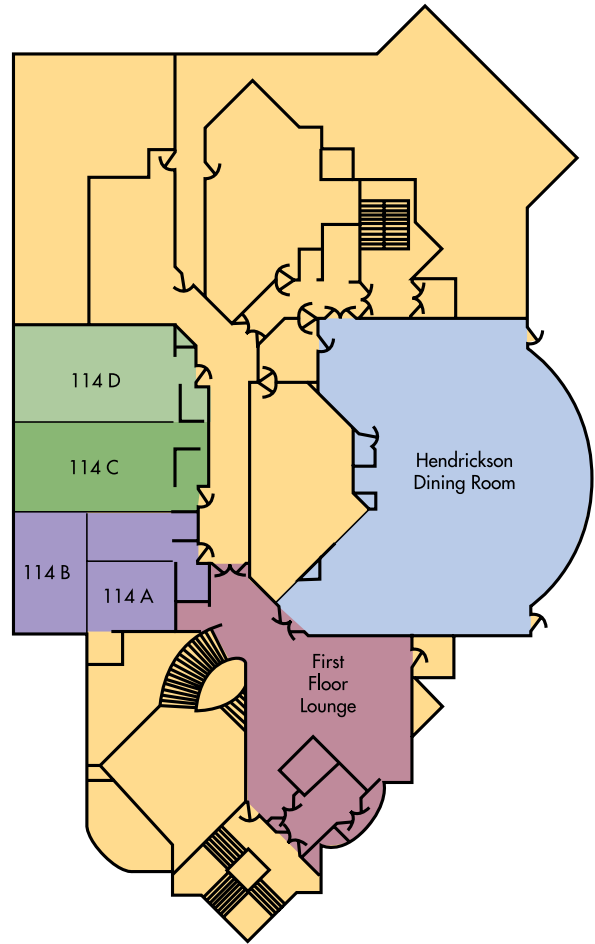
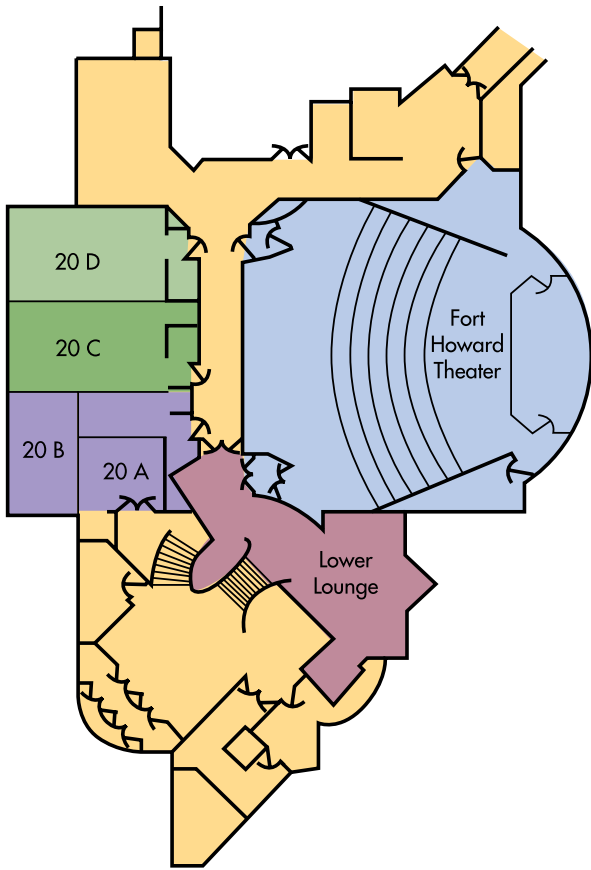
The Kress Inn

300 Grant Street
De Pere, WI 54115
ph: 920-403-5100 • 800-221-5070
www.kressinn.com

F.K. Bemis Conference Center

100 Grant Street
De Pere, WI 54115
ph: 920-403-4000 • 800-397-3638
fax: 920-403-3952
www.snc.edu/conference





Name	Size	Sq. Feet	Theater	U-Shaped	Classroom	Dining
114A	14' x 16'	224	-	9	-	-
114B	17' x 22'	374	20	12	-	-
114C	22' x 33'	726	50	24	24	-
114D	22' x 33'	726	50	24	24	-
114AB	33' x 22'	726	50	24	24	-
114ABCD	33' x 66'	2,178	196	37	90	-
114 CD / 114ABC	33' x 44'	1,452	112	33	60	-
20A	14' x 16'	224	-	9	-	-
20B	17' x 22'	374	20	12	24	-
20C	22' x 33'	726	50	24	24	-
20D	22' x 33'	726	50	24	24	-
20ABCD	33' x 66'	2,178	196	37	90	-
20CD/20 ABC	33' x 44'	1,452	112	33	60	-
First Floor Lounge	Irregular	600	-	-	-	-
Fort Howard Theater	60' x 56'	3,360	200	-	-	-
Hendrickson Dining	67' x 54'	3,618	-	-	-	175
Lower Lounge	Irregular	468	-	-	-	-